

STM 2

Drawstring Backpack or Pouch

Materials

Quilting-weight fabric is recommended.

Exterior: 1 piece 14" x 36"

Lining: 1 piece 14" x 36"

Nylon Cording: 4 yards, 1/8" diameter, **(2 yards if making pouch)**

Optional: Pocket: 2 pieces 7 1/2" x 5 1/2" and

Fusible interfacing: 7 1/4" x 5 1/4".

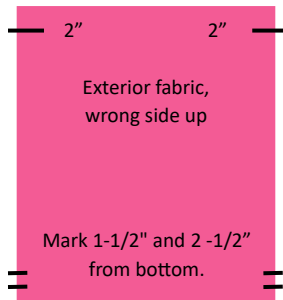


Instructions

1/4" seam allowance. Backstitch at the beginning and end of each seam.

MAKE THE EXTERIOR

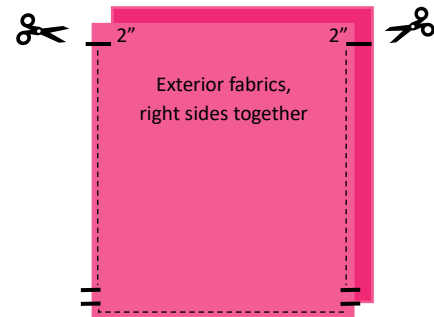
1. Cut two exterior fabrics 14" wide x 18" long.
2. In the seam allowance on the wrong side of one exterior piece measure and place a mark 2" down from the top on each side.



3. On the same fabric place marks 1-1/2" and 2-1/2" up from the bottom as shown. **(For pouch DO NOT make openings.)**
4. Pin exterior fabrics right sides together. Starting at the 2" mark and backstitching, sew to the mark 2-1/4" from the bottom and backstitch. Leave an opening and begin to stitch at the 1-1/2" mark, then backstitch after several stitches. Continue sewing to corner, pivot, stitch across the bottom, pivot at the next corner and continue to the 1-1/2" mark, then backstitch.

Stitch from the bottom 2-1/4" mark to the top 2" mark, being sure to backstitch at both marks.

5. Clip the bottom corners at a 45-degree angle. **Straight clip TO, but not through** the side seam allowance allowances at the upper 2" mark. Turn the bag exterior right side out. Press.



OPTIONAL Pocket - Can be made other sizes

If you want to add a pocket to the inside of your backpack, now is the time to do it. Cut two rectangles 7 1/2" x 5 1/2". Fuse the 7 1/4" x 5 1/4" interfacing to the wrong side of one piece. Place pieces right sides together, pin, then stitch with a 1/4" seam leaving an opening at the side or bottom for turning right side out. Press well. Center and pin the pocket about 5" down from the lining top. Stitch on three sides, leaving the top open.



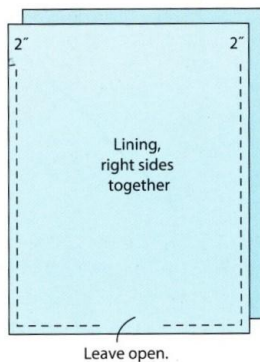
STM 2

Drawstring Backpack or Pouch

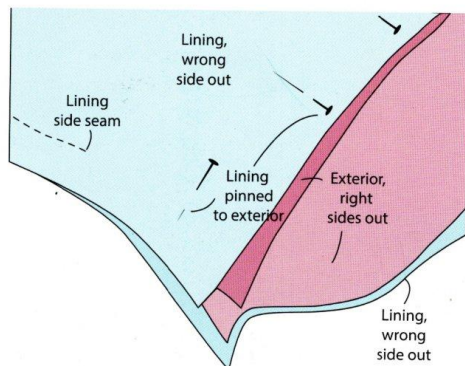
MAKE THE LINING

Cut two lining fabrics 14" wide x 18" long.

1. Mark 2" down from the top of the lining pieces and mark a 4" turning opening at the bottom of one side so it can be turned right side out later. Place lining pieces right sides together, marked side up and pin. Stitch, making sure to backstitch at the beginning and end. After it is sewn clip the bottom corners, but **DO NOT clip** at the 2" marks.

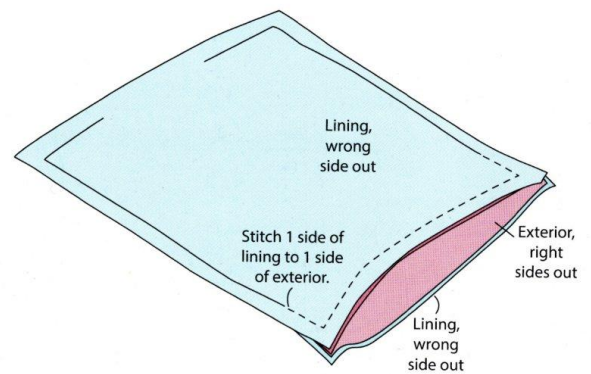


2. Insert the bag exterior into the bag lining, right sides together, and line up the upper raw edges and the side seams.



3. On one side of the bag *only*, pin the lining and exterior pieces together starting at the 2" mark, continuing along the upper edge of the bag and down the open 2" where the side seam stopped. Flip the exterior seam allowance out at the clip to meet the raw edges of the lining.

4. Sew together starting where the side seam stopped at the 2" mark, being sure to backstitch or lock your stitches, then continue sewing up the pinned side, pivoting at the corner. Continue to stitch across the upper edge, then pivot at the opposite corner, and stitch down the side, stopping and backstitching at the 2" mark.



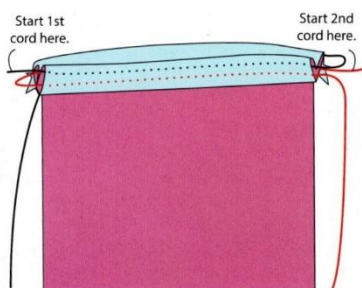
5. Repeat steps 8 and 9 on the opposite side of the bag with the remaining open lining and exterior edges.
6. Turn the bag right side out through the opening in the lining. Push the lining inside the exterior. Reach through the opening in the lining and poke/push out the exterior corners with a chopstick. Pull the lining back out and press the raw edges of the opening inside. Sew the opening closed either by hand or by machine, stitching as close as possible to the edge. Push the lining back inside the bag a final time and press the upper edge of the bag nice and flat.

STM 2

Drawstring Backpack or Pouch

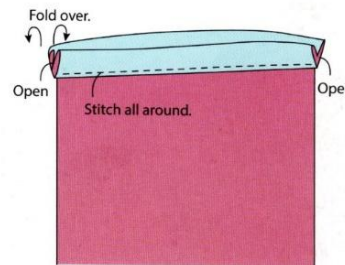
MAKE THE CASING

1. Fold the upper edge of the bag down 1" to the outside and press flat. Pin all around the bag and sew the folded edge down about 1/8" from the seam. If your machine has a free arm, it will make it easier to sew.
2. Cut the cording into 2 equal lengths.



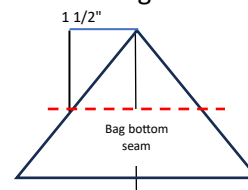
3. Use a large safety pin or bodkin at one end of the piece of cord to thread it through one side of the casing. When you get to the opening on the other side, continue through the other side until you are back to where you began. Remove the safety pin and gently pull the cord through the casing (without drawing it up) so that both ends are even.
4. Repeat step 3 with the other piece of cord, starting at the opposite end of the casing.
5. If making the pouch, Do Not do steps 6 – 8. Skip to step 9 to complete/
6. Starting with one side and making sure there are no twists, bring the cord ends down to the opening on that side and tuck in about 1". Pin in place. Do the same to the other side.
7. Try on the backpack and adjust straps to fit comfortably for you. Trim if necessary.
8. Edge stitch the openings closed.

9. Pull the drawstrings from opposite ends and gather the casing to complete your backpack.



Optional

To add a little more structure to the backpack, poke out the bottom corners of the bag, line up the bottom and side seams, and flatten the corner into a triangle shape. Pin flat and mark a line 1-1/2" from the tip of the corner. Sew on the line, backstitching at each end.



This pattern was modified and adapted from Drawstring Backpack by Virginia Lindsay published in Make 1-Hour Gifts for Sew Teach Me 2 after the publication went out of print.