

# STM2

## Notepad Cover

### Materials


- 1/3 yard focus/front fabric - cut 1 piece 12-1/2" x 9-1/2" and two pieces 3" x 5"
- 1/3 yard lining fabric - cut 1 piece 12-1/2" x 9-1/2"
- 1/3 yard pocket fabric - cut 1 piece 12-1/2" x 12"
- Cotton batting: 14" x 11" and 1 piece 3" x 5" for tab
- 2-1/2" piece Velcro (hook & loop sides)
- Notepad 5" x 8"




### Instructions

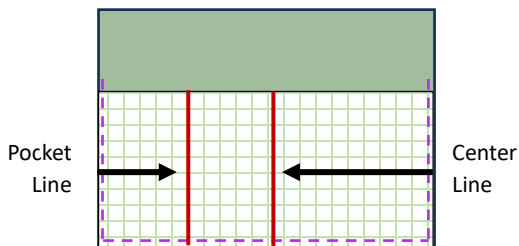
1/4" seam allowance

#### OUTSIDE AND BATTING

1. With the right side up, center the focus fabric over the cotton batting. 
2. Baste the outside fabric and the cotton batting together close to the fabric raw edge.
3. Trim away the excess batting. Treat this "sandwich" as one piece from now on.

#### LINING AND POCKETS

1. Fold the pocket piece in half with the wrong sides together matching the 12-1/2 sides. It should  measure 12-1/2" x 6". Press.
2. Place the folded pocket piece over the right side of the lining fabric, matching the raw edges at the sides and bottom.
3. Baste the pocket to the lining close to the raw edges as shown with dashed purple lines.



4. Using the red lines as a guide, stitch the pocket to the lining down the center. Start at the bottom edge, stitch up to the fold, then backtrack over the stitching to the bottom. Stitch another pocket seam to the left between the center line and the

outside edge. These two smaller pockets are for pencils, pens, markers, rulers etc.

(Optional) If you or the person you are making this for is left-handed, put the pencil/marker pockets to the right side of center and leave space for the notepad on the left.)

#### CLOSURE TAB

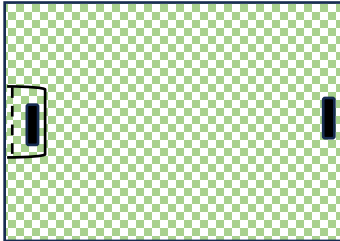
1. Trace the tab pattern on page 2 and use it to cut 2 focus fabric pieces for the tab.
2. With right side up, center 1 tab piece on the batting then baste together close to the fabric edge. Trim away excess batting. This will be the underside of the tab where the Velcro is added.
3. Center one side of a 2 1/2" piece of Velcro 5/8" away from the edge with the rounded corners. Stitch close to the Velcro edge as shown below.
4. Place the remaining tab, right sides together on top of the one with the Velcro. Pin together, then stitch with a 1/4" seam, leaving the straight edge open.
5. Trim the seam allowance to 1/8". Turn the tab right side out and press.
6. Topstitch close to the edge.



# STM2

## Notepad Cover

- Center the tab along the left 9-1/2" edge of the face-up outside/focus fabric with the Velcro side facing up. Baste in place.



- Measure, then place the other half of the Velcro on the opposite side of fabric piece.
- Pin in place 5/8" from the edge of the notebook cover front, then stitch around the Velcro edge as shown in Step 3 above.

- Turn the piece right-side out through the opening. Press.
- Topstitch close (1/8") to the edge around the entire cover. This will close the opening. Then stitch 1/4" from the edge for a double stitching line.
- Insert Notepad and writing instruments.

*These make fun gifts for friends and family!*

### FINISHING

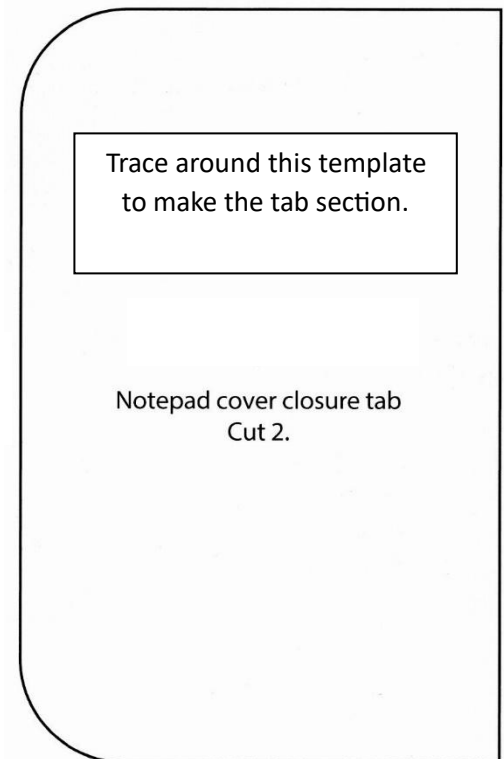
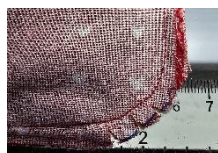
- With the right sides together, pin the lining with attached pockets to the cover front. The notepad pocket should cover the tab.



- Use a round object to mark the four corners.



- Use a 1/4" seam sew the lining and outside cover together all around the edge, leaving a 3-1/2" opening at bottom on the side with two pockets. Snip the corners so they lay smoothly.



This pattern was modified and adapted from Notepad Cover by Sweetwater published in Make 1-Hour Gifts for Sew Teach Me 2 after the publication went out of print.